

# MERIDIAN

CLYDE NORTH



**FROM \$ 649,500**  
**Kensington 337 – Meridian**  
**Lot 2318**



2



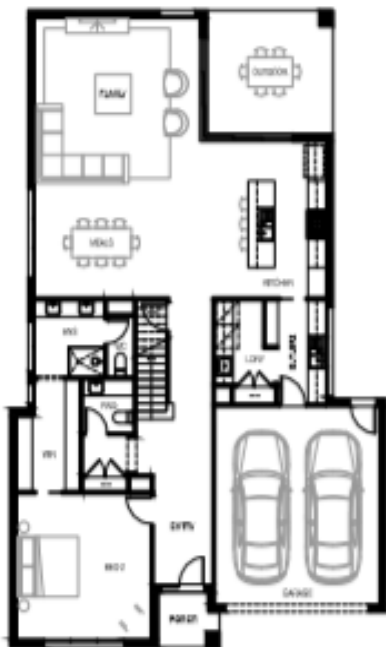
4



3 1/2



2



Ground Floor



First Floor

House size: 36.25 sq.

Land Size: 420 m<sup>2</sup>

Block Width: 14 m

Block Length: 30 m

- Davidson Constructions who specialize in custom builds
- flexibility to modify any of our standard villa series floor plans
- Virtual tour at [www.Orlarahomes.com](http://www.Orlarahomes.com)
- Council and developer requirements
- 6 star energy rating
- Quality SMEG appliances
- Stone to Kitchen, bathroom & Ensuite
- Quality SMEG appliances
- Gas ducted heating
- Remote control garage door

**Full turn key package available**

[orlarahomes.com.au](http://orlarahomes.com.au)



RBP  
REGISTERED  
BUILDING  
PRACTITIONER



This pricing & floorplan is subject to obtaining the following information: Final working drawings, soil report, energy rating report, engineering plans and developer approval (if required). This proposal includes the Builders standard specifications. All pricing and items are subject to availability and may be modified within reason by the builder with notice given to the building owner. Images are for illustration purposes only and may not represent the outcome for your new home exactly.